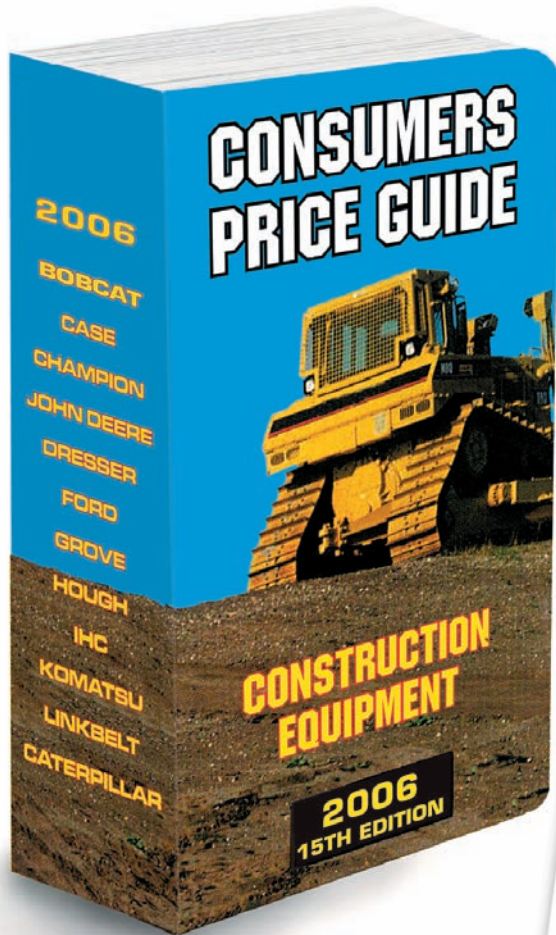


# FINALLY!

## A Blue Book For Construction Equipment



Actual Size: 3"x6" (pocket size)

**OVER 1,000 PAGES OF PRICES, VALUES & CATERPILLAR SPECS**

Includes:

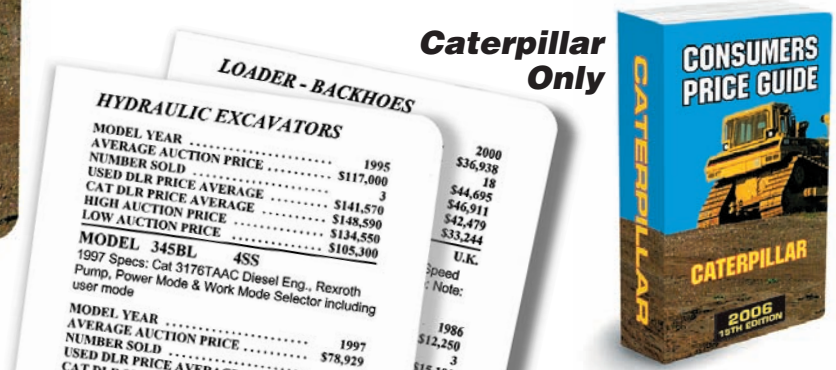
- ◆ Average Auction Price
- ◆ Model Year
- ◆ Number Sold
- ◆ Used Dealer Price Average
- ◆ Cat Dealer Price Average
- ◆ Low Auction Price



*THE ONLY BOOK YOU NEED!*

THE MOST ACCURATE, COMPLETE BOOK YOU WILL FIND

[www.consumerspriceguide.com](http://www.consumerspriceguide.com)



**Caterpillar Only**

### ORDER FORM

- Consumers Price Guide Construction Equipment** . . . . \$285.00 (Most Major Makes & Models)
- Consumers Price Guide Caterpillar Only** . . . . . \$99.00
- Consumers Price Guide Trucks & Trailers** . . . . . \$275.00
- Construction Equipment Appraisers Serial Number Guide For Caterpillar Machinery** . . . . \$94.00

**SHIPPING/HANDLING:**

One book, add \$10.30  
Two or more books, add \$20.30 \$ \_\_\_\_\_

ADD 8.25% Sales Tax (CA only) \$ \_\_\_\_\_

**TOTAL AMOUNT CHECK OR MONEY ORDER** \$ \_\_\_\_\_

# YES!

## Send me the NEW 2006 Consumers Price Guide

Company \_\_\_\_\_

Name \_\_\_\_\_

Street \_\_\_\_\_

City \_\_\_\_\_ State \_\_\_\_\_ Zip \_\_\_\_\_

Country \_\_\_\_\_ Phone Number \_\_\_\_\_

Number of CAT books: \_\_\_\_\_ Number of Trucks & Trailers books: \_\_\_\_\_

Number of Construction Equipment books: \_\_\_\_\_ Number of Serial Number guides: \_\_\_\_\_

M/C  VISA Card No.: \_\_\_\_\_ Exp Date: \_\_\_\_/\_\_\_\_/\_\_\_\_

AMEX  Mail Order: P.O. Box 298 • Torrance, CA 90507

Fax Order: (310) 320-2911  Phone Order: (310) 320-2831

[www.consumerspriceguide.com](http://www.consumerspriceguide.com)



INTERNATIONAL SALES: Min. shipping charge \$20.30. Must be paid in U.S. Dollars with a U.S. Bank designate on the check. All sales are final.

# CONSTRUCTION EQUIPMENT APPRAISERS

## Serial Number Guide for Caterpillar Machinery



Actual Size:  
3"x5.25"  
(pocket size)

### THE GREATEST LITTLE BOOK IN ITS FIELD!

- ◆ Over 1,200 Equipment Models
- ◆ Over 19,000 Entries
- ◆ Most Complete and Up-To Date
- ◆ And It Still Fits In Your Pocket



CRAWLER TRACTORS D7S	
<b>MODEL D7R,</b>	<b>SER 2HR, USA</b>
2HR 629 --- 632	1995
2HR 633 --- 638	1996
2HR 639 --- 740	1996
2HR 742 --- 847	1997
2HR 850 --- 852	1998
2HR 853 --- 999	1999
2HR 1000 - 1062	2000
1996 Specs: STD, PS Replacement, Dif., Steering w/AutoShift, AMOCS Radiator, Elec., Powershift Trans., Ecology Drains	
<b>MODEL D7R,</b>	<b>SER 3DN, USA</b>
3DN 218 -- 218	1995
3DN 219 -- 223	1995
3DN 224 -- 223	1995

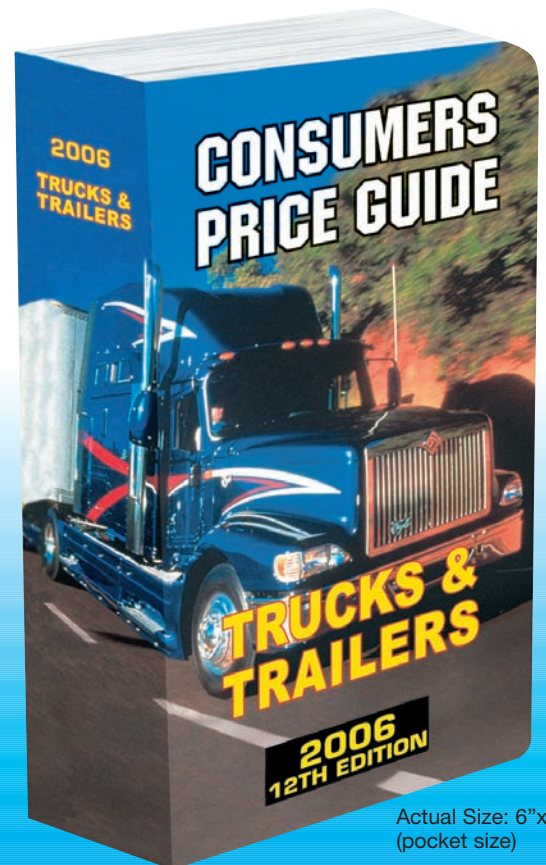
[www.consumerspriceguide.com](http://www.consumerspriceguide.com)

## FIND THE TRUCK YOU NEED AT TODAY'S AUCTION PRICES!

# 2006 RELEASE TRUCKS & TRAILERS

OVER 700 PAGES OF PRICES, MODELS AND SPECS

FORD • CHEVROLET • GMC • DODGE  
GREAT DANE • WHITE • PETERBILT • MACK  
KENWORTH • IHC • FREIGHTLINER • AUTOCAR  
AND MUCH MORE!



Actual Size: 6"x3"  
(pocket size)

FORD FLATBED	
<b>MACK DUMP TANDEM</b>	
<b>MODEL</b>	<b>RD-688-S</b>
<b>MODEL YEAR</b>	1995
<b>AVERAGE AUCTION PRICE</b>	\$10,900
<b>NUMBER SOLD</b>	12
<b>HIGH AUCTION PRICE</b>	\$12,535
<b>LOW AUCTION PRICE</b>	\$9,265
<b>SPECS: E7-350 MACK ENG., FULLER 8 LL</b>	
<b>TRANS.</b>	SESL
<b>MODEL</b>	1996
<b>MODEL YEAR</b>	RD-688-S